



For proper installation and best possible fit, please read all instructions BEFORE you begin.

Important Information

BEFORE you begin the installation process:

- Carefully read all instructions.
- Verify that all parts are included by checking the contents of your kit.

If any parts are missing or appear damaged, please contact our customer service team for assistance.

Customer Service

For support, please contact the Putco team, available Monday to Friday 8:30 AM to 5PM (Central Time).

1 800 247 3974

support@putco.com

Recommended Tools + Supplies

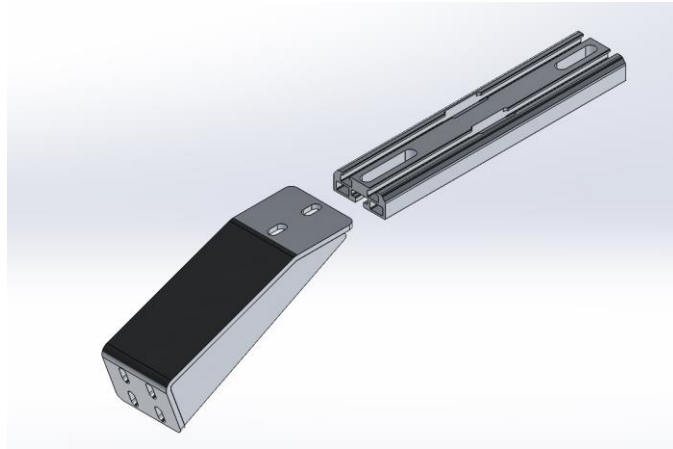
| | |
|------------------------|-----------------------|
| 3/16" Hex Key | 1/2" Wrench or Socket |
| 7/16" Wrench or Socket | |

Kit Contents

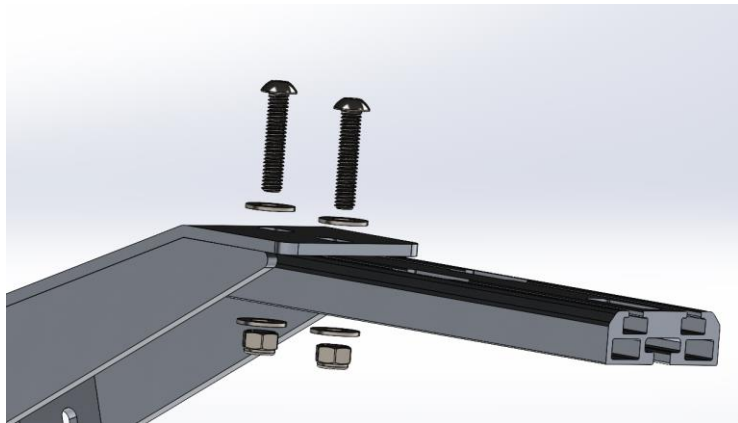
| | | |
|------------------------|--------------------------------|--------------------------------|
| 4 x Base Brackets | 4 x Top Brackets | 4 x Tec Uprights |
| 2 x Tec Bar | 4 x Tec Caps | 4 x Upper Nut Plate |
| 16 x 1/4"-20 Lock Nuts | 16 x 5/16"-18 1.5" Long Screws | 12 x 5/16"-18 0.5" Long Screws |
| 32 x 5/16" Washers | 16 x 5/16" Lock Nuts | 16 x 1/4"-20 0.75" Long Screws |

Step by Step Installation

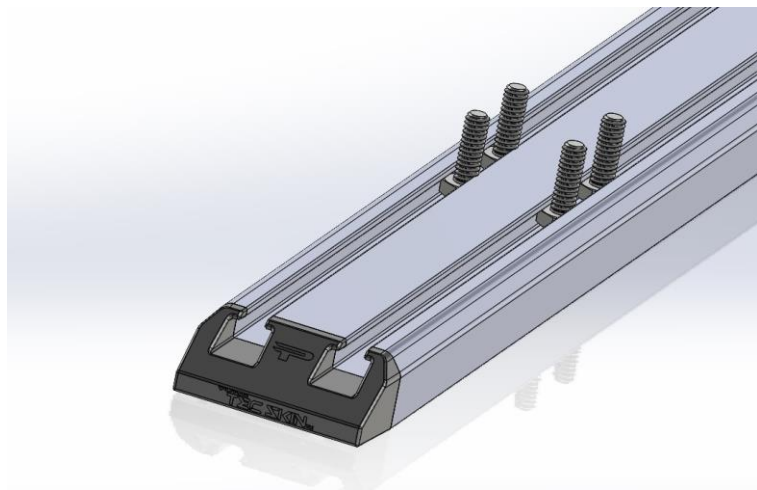
1. Locate the base bracket and tec-upright and orient to match the following. **The longer slot aligns with the base bracket.**



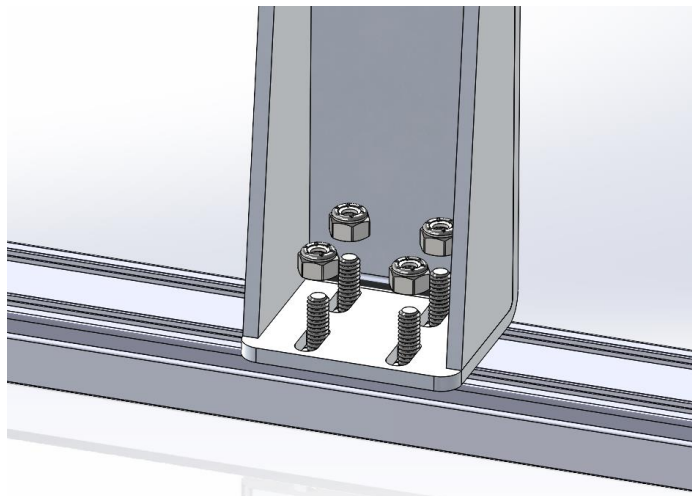
2. Slide the upright into the base bracket and fasten using the 1.5" long 5/16"-18 screws.



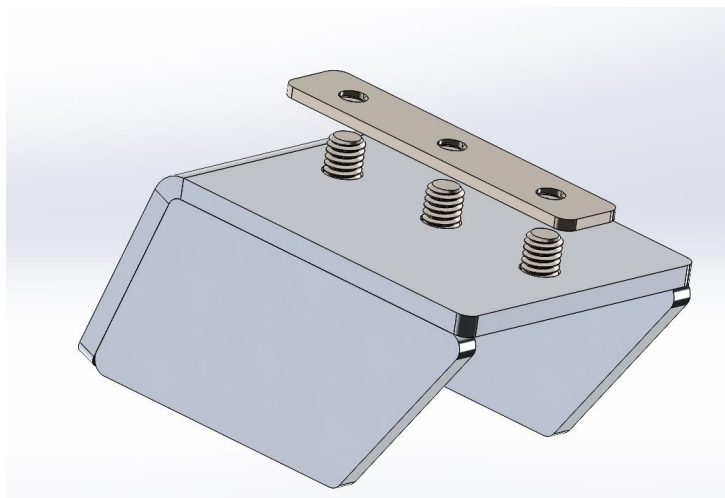
3. Slide the 1/4"-20 screws into your tec skin with the top of the screw exposed as seen in the figure.



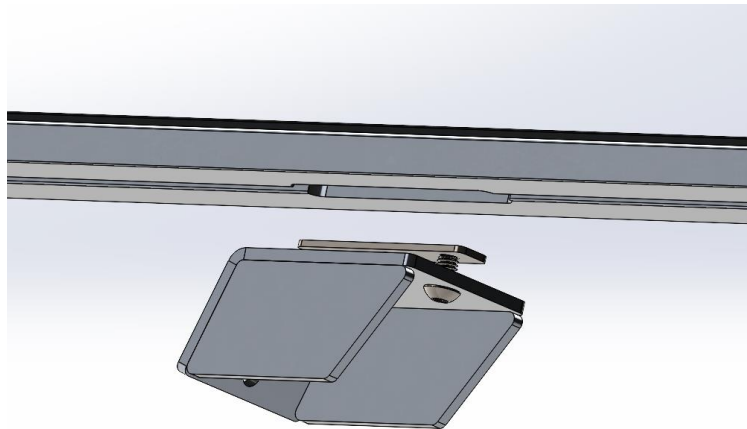
4. Mount the base bracket to the tec skin as shown and fasten using the 1/4"-20 lock nuts



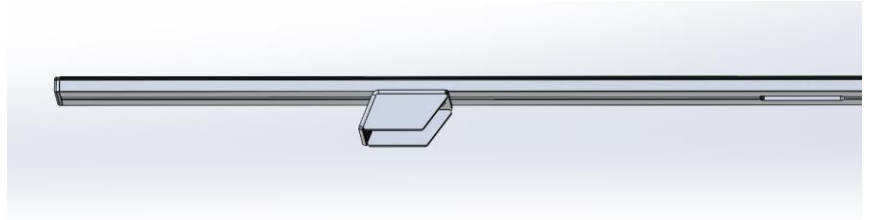
5. Locate the top bracket and nut plate and attach using the 0.5" long 5/16"-18 screws. **Do not fully tighten yet.**



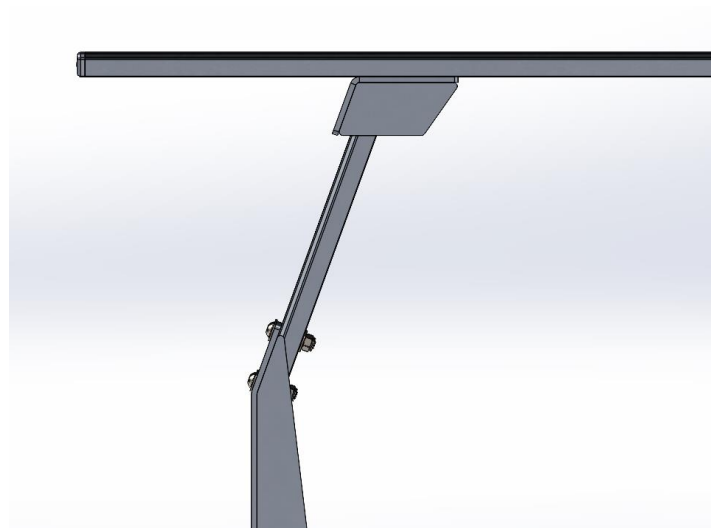
6. Locate the tec bar and find the slot on the under channel.



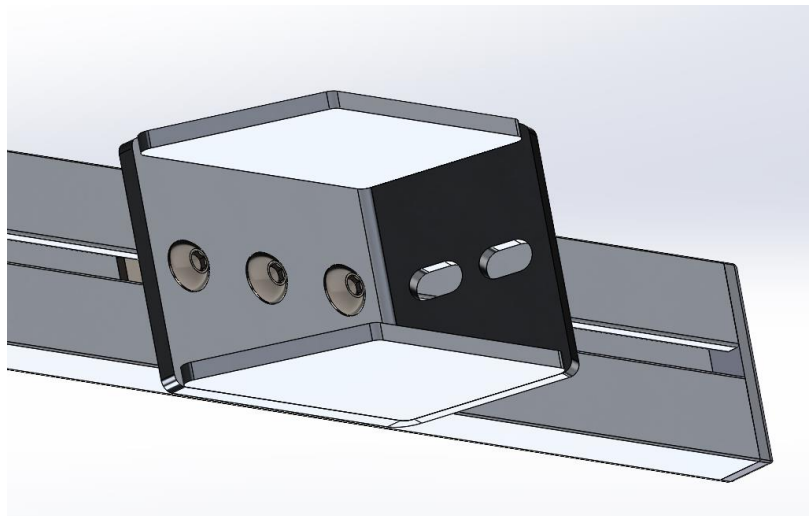
7. Insert the upper bracket and slide it along the tec bar.



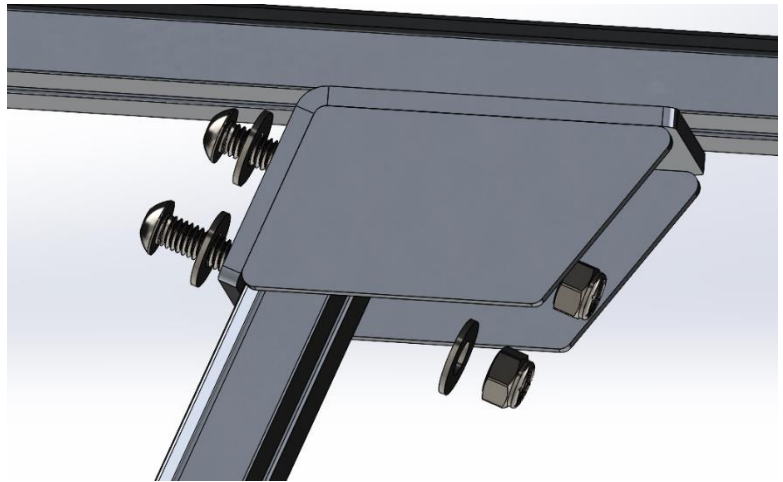
8. Align the top bracket with the upright that was installed in step 4. Ensure that the bar is evenly spaced on both sides.



9. Tighten the three screws of the upper bracket.



10. Mount the upper bracket to the upright and tighten using the 1.5" long 5/16"-18 screws.



11. Repeat this process until each hoop is finished.



Congratulations on completing the installation of your Putco product!
For information regarding your warranty, please visit www.putco.com/warranty.

Issues? Please Contact Our Technical Support Team:
1 800 247 3974



WARNING: Final Inspection required. Inspect product was properly Installed and all installation instructions were followed.



For additional information, please visit our website at www.putco.com!