

## ELEMENT SKY VIEW INSTALLATION INSTRUCTIONS

Congratulations on your purchase of a high quality PUTCO product. Should you need any application or technical assistance, feel free to call us at: 1-800-247-3974

Monday-Friday 8:00 a.m. - 5:00 p.m. (Central Standard Time)

Contact your PUTCO dealer for other quality accessories.

**Please read all instructions before installation and to check to see that all parts are included.**

CONTENTS:	
Description	Qty.
Sky View Roof Panel	1
Stainless Steel Hand Bolt	6

No Tools Required!  
Hands only installation.



## Installation Instructions:

1. Remove the front section of the factory hard top. Un-zip and pull back the roll bar covers on the sides of the vehicle to access the rear hole in the roll bar. To keep the roll-bar covers installed, poke a hole in the cover that aligns with the hole in the roll bar.



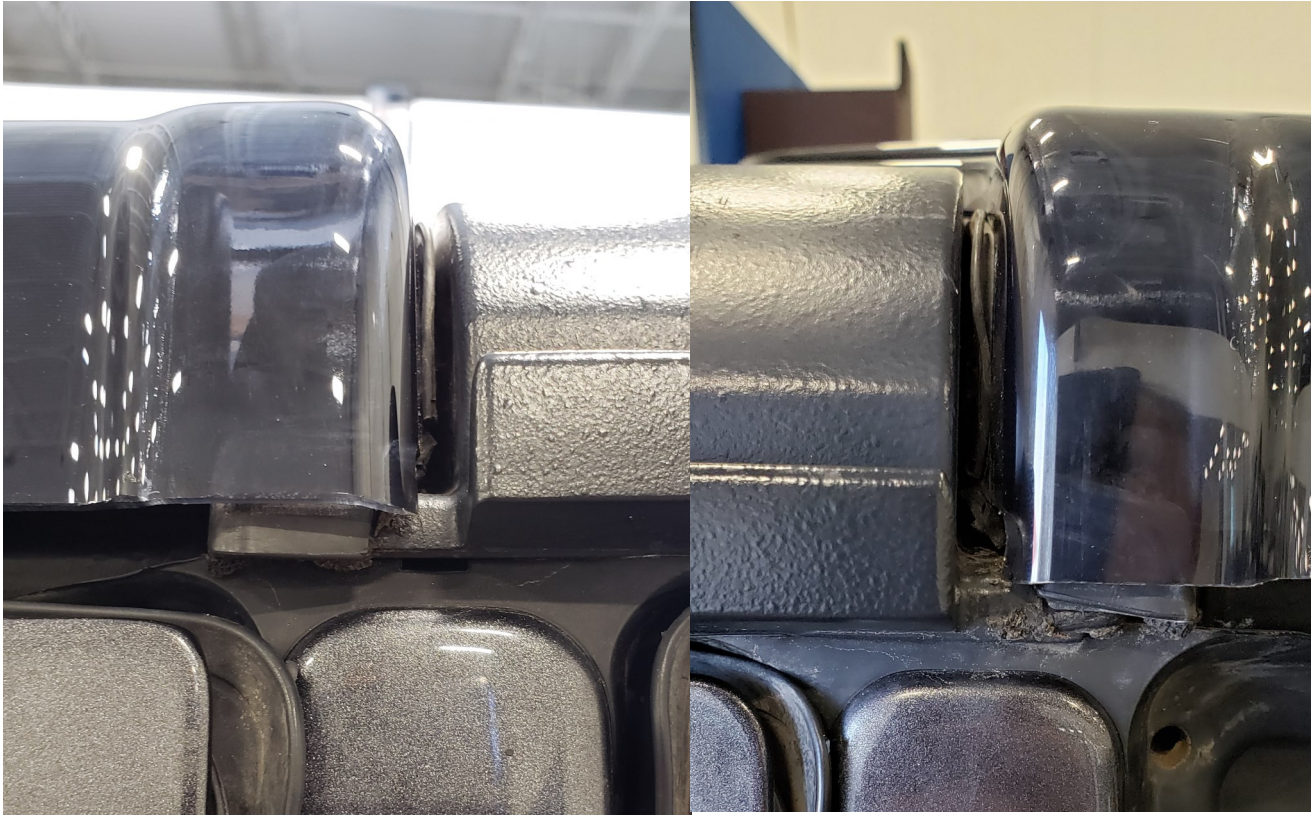
2. Place the Sky View roof panel on the top of the vehicle. Do not remove the protective film from the clear roof panel until the installation is complete. Only peel back the protective film as far as necessary to install the clear roof panel.





# PUTCO

3. Align the clear roof panel with the rear stock roof panel by lifting the panel and pulling towards the rear of the vehicle. A properly aligned top should look like the pictures below and aids in threading the stainless steel hand bolts into the nut plates.



4. Insert the six stainless steel hand bolts through the roll bar and loosely thread them into the six adapter plates. The two stainless steel hand bolts without the rubber vibration dampers go in the rear holes shown below.

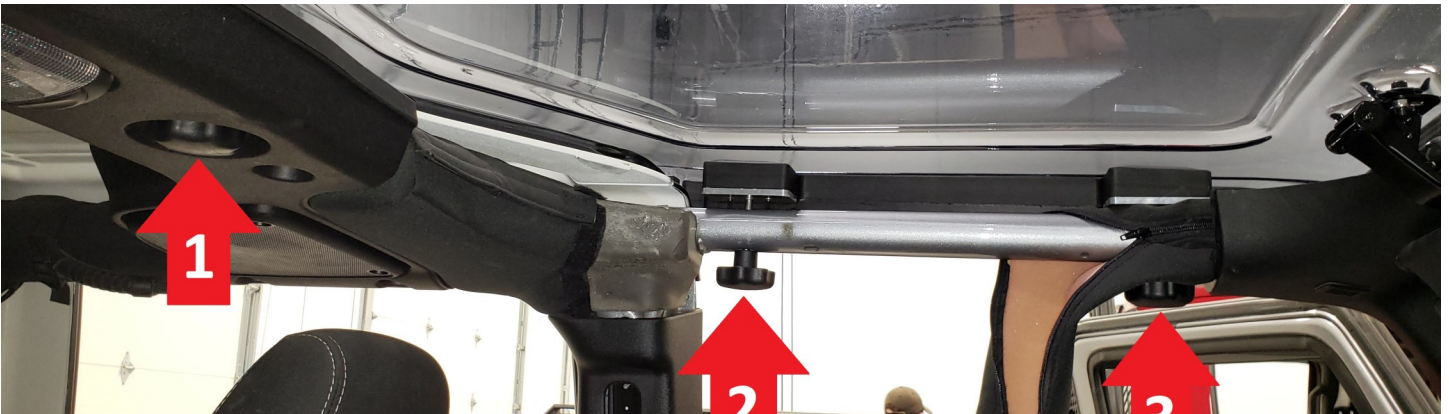




5. Close the three front clamps starting with the middle clamp.



6. Starting at the rear of the vehicle, slowly tighten the hand bolts in the order shown below. Do not over tighten.



7. Remove the protective film from the Sky View roof panel.



8. The rubber damper should be placed between the handle and the roll bar to prevent scratching your factory paint. It's important to note that a slight gap between the roll bar and the screw plate is entirely normal, do **not** over-tightening the components.



***Your new Sky View roof panel is  
now successfully installed on your  
vehicle!***

## CLEAR ROOF PANEL CARE INSTRUCTIONS

- Do NOT use chemicals or abrasives on the clear roof panel.
- Use only water and wipe GENTLY with a microfiber towel for cleaning. Applying too much pressure can scratch the clear roof panel.
- When taking the clear roof panel through a car wash, use only a TOUCHLESS car wash. The brushes in a regular car wash can scratch the clear roof panel.

