

2011-19 Durango Blade LED Extrusion Kit

Congratulations on your purchase of a high quality PUTCO product. Should you need any application or technical assistance, feel free to call us at: 1-800-247-3974

Monday-Friday 8:00 a.m. - 5:00 p.m. (Central Standard Time)

Contact your PUTCO dealer for other quality accessories.

Please read all instructions before installation and to check to see that all parts are included.

KIT CONTENTS:	
Description	Qty.
Blade LED Lightbar in Powdercoated Extrusion	2
Powdercoated Mounting Brackets	8
10-24 1/2" Stainless Steel Bolt (8 pre-installed in extrusion)	24
10-24 Stainless Steel Nylon Locknut	24
Stainless Steel Self Tapping Screw (#10 x 1")	8
Rocker Switch	1
Lightbar Remote	1

Tools Needed:

- Socket set or wrenches (5/16" and 3/8")
- Cordless drill/impact driver
- Wire strippers
- Wire crimpers

Installation Instructions:

This kit was designed to mount to existing holes on the underside of vehicle, behind the rockers (**Figure 1**). Additional self tapping screws are included to provide extra durability.

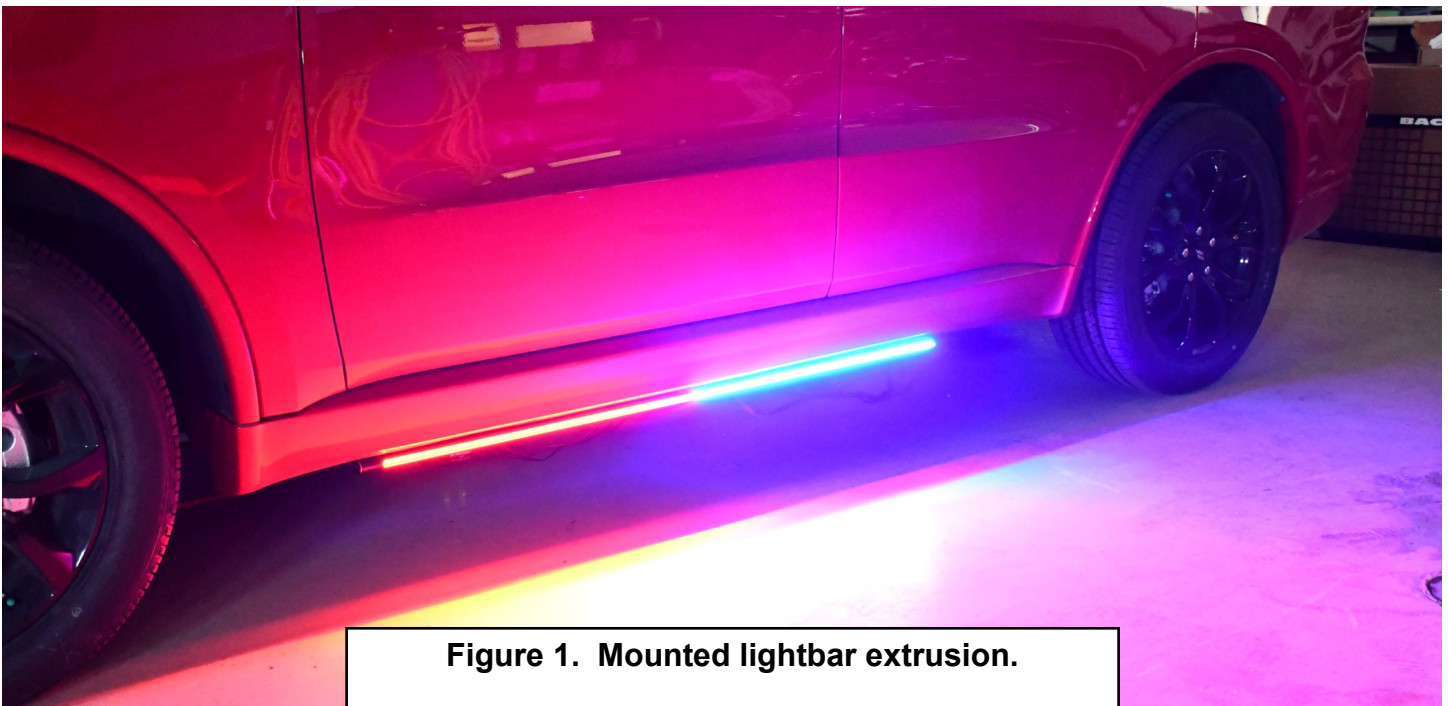


Figure 1. Mounted lightbar extrusion.

Mounting Instructions:

1. There are 8 holes on the underside of the vehicle (**Figure 2**). Putco recommends using the 2nd, 4th, 6th, and 7th hole, starting from the back of the vehicle. Other combinations can be used to move the lightbar fore or aft.

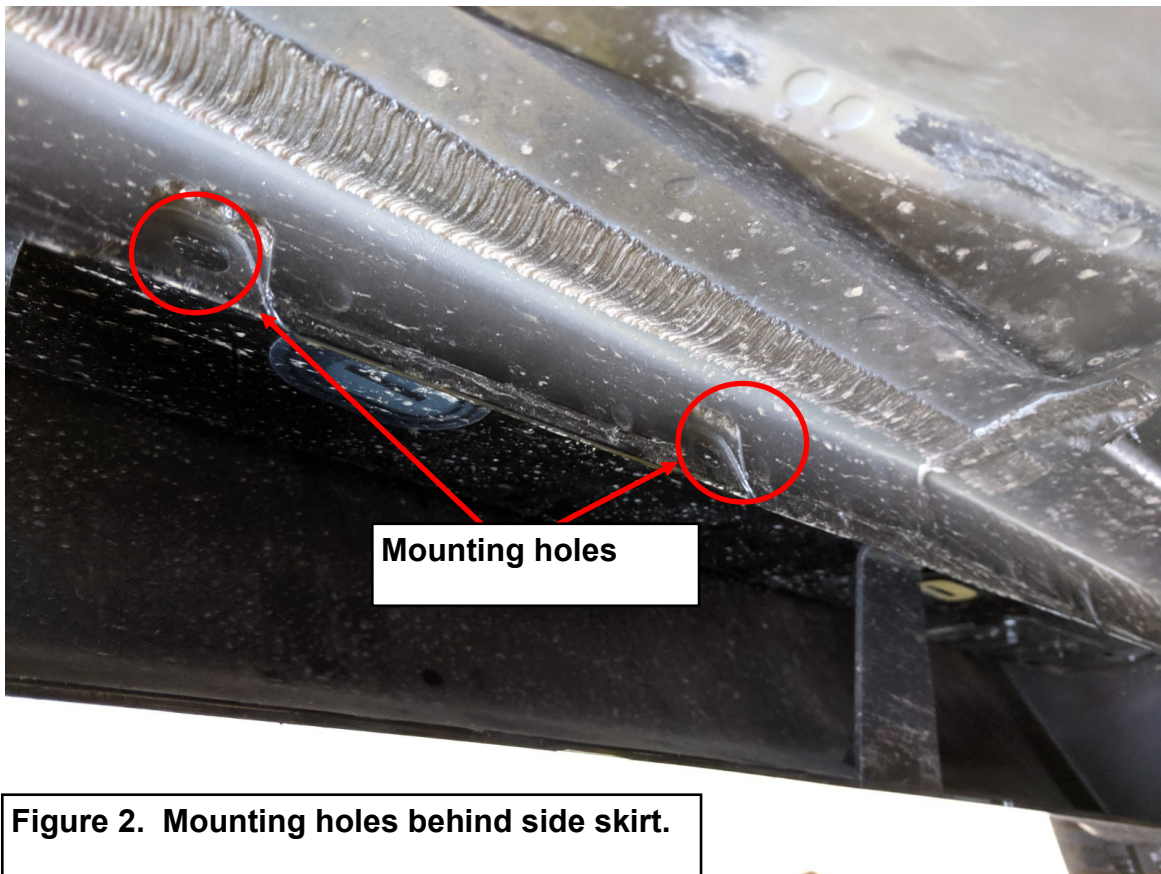


Figure 2. Mounting holes behind side skirt.

2. Using provided fasteners, install mounting bracket as shown in **Figure 3**. Do not fully tighten yet. Repeat with the other brackets.



Figure 3. Bracket partially installed.

3. Align the 4 bolts (Figure 4) in the lightbar extrusion with the slots on brackets and insert.

Figure 4. Lightbar extrusion mounted to vehicle.



4. Using provided locknuts, loosely mount extrusion to the brackets installed in steps 1 and 2. The slots allow adjustment of the lightbar to ensure it is level and visible.
5. When the Lightbar Extrusion is mounted in the desired location, fully install brackets by tightening locknuts and driving in self-tapping screws with impact drill.
6. Fully tighten locknuts with 3/8" socket, securing extrusion to brackets.
7. Route the black driver box and wires to a location safe from road debris, moving parts, and heat. Zip-tie into place.

Wiring Instructions:

Wire Colors and Function	
Wire	Function
Red	12 volt +
Black	Ground
Green	Strobe
White	Reverse or white override

1. Wire the red wire to a 12 volt + source, and the black wire to chassis ground. The lightbar will not illuminate until 12V is applied to either the green or white wire.
2. Take a switched positive 12 volt power and tie it into the green wire. When 12 volt positive is applied to the green wire, the Blade will strobe. If using the provided switch, connect the gold terminal to vehicle ground, the middle terminal to green wire, and the final terminal to a constant 12 volt source (**Figure 5**).
3. Take a switched positive 12 volt power and tie it into the white wire. If using the provided switch, connect the gold terminal to vehicle ground, the middle terminal to white wire, and the final terminal to a constant 12 volt source (**Figure 5**).

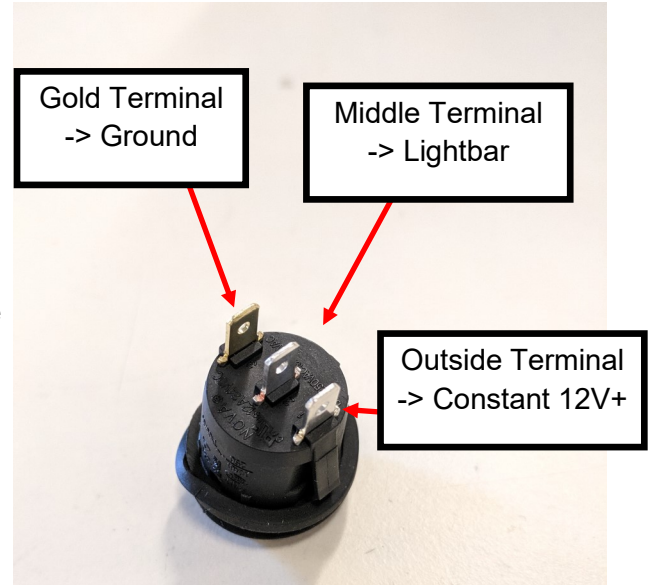


Figure 5. Switch terminal identification.

Programming Instructions:

1. Remove the included remote from its packaging.
2. Turn on the light bar and switch on the strobe function. The strobe pattern may be changed **only when** the strobing function is active.
3. The remote has four buttons: Strobing Pattern (P) UP/DOWN, and Strobing Speed (S) UP/DOWN. Press the P UP and P DOWN to cycle through the functions until the desired pattern is found. Press the S UP and S DOWN to adjust the speed (frequency) of the pattern.
4. Once the desired pattern and speed is set, the remote is no longer need for normal operation. The remote can be stored and would only be needed to change the pattern.

Tip: When programming multiple lightbars, only activate one lightbar's strobe function at a time to prevent accidental switching of desired patterns on the other lightbars. Repeat this process until all lightbars are set to desired pattern and frequency.

NOTE: This product is intended for commercial use only. Putco is not responsible or liable for any legal issues resulting in the use of this product beyond its commercial intent.