

# LED Ford Emblem

## 2024/25 Ford Explorer Installation Guide

Congratulations on your purchase of a high quality PUTCO product. Should you need any application or technical assistance, feel free to call us at: 1-800-247-3974

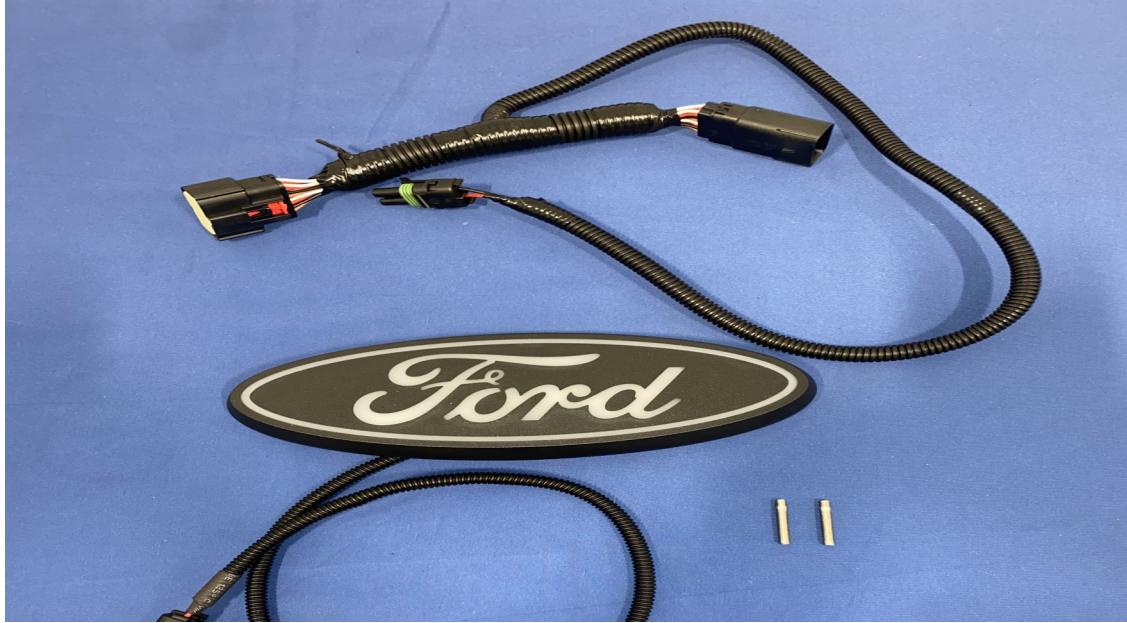
Monday-Friday 8:00 a.m. - 5:00 p.m. (Central Standard Time)

KIT CONTENTS:		Additional Tools Needed:
Description	Qty	
Quick Connect Harness	1	<ul style="list-style-type: none"> <li>- Zip-Ties</li> <li>- Side Cutters</li> <li>- Socket Wrench</li> <li>- 8mm <u>Deep</u> Socket</li> <li>- 7mm Socket</li> <li>- 10mm Socket</li> <li>- 1in Hole Saw and Drill</li> </ul>
LED Emblem	1	
Emblem Studs	2	
Stud Nuts (8mm)	2	

### Installation Overview

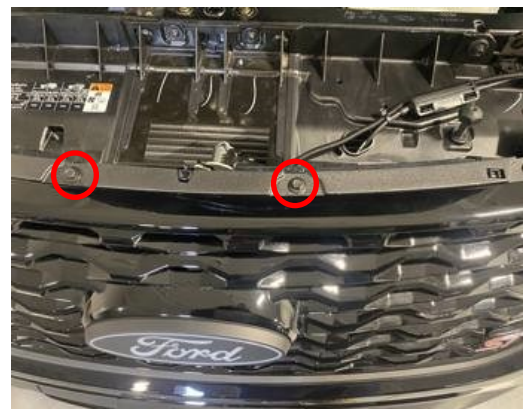
- Verify the kit contents above. (page: 2)
- Remove front grill assembly fasteners and undo clips (Pages: 3-6)
- Disconnect the wiring harness from the front grill assembly (page: 7)
- Remove OE Ford emblem (page: 7)
- Drill 1" hole behind Ford emblem (page: 8)
- Assemble and mount Putco emblem on grill (pages: 8-9)
- Install Putco quick connect harness and zip-tie loose Cables (page: 10)
- Route Putco emblem harness through specified channel and reinstall OE wiring harnesses (page: 11)
- Reinstall front grill assembly (pages: 11-13)
- Double check all work (page: 14)

Verify all of the following contents are included



## Removing the front grill assembly

1: Remove the 4 fasteners on the top of the grill assembly using a 10mm socket and socket wrench



## Removing the front grill assembly

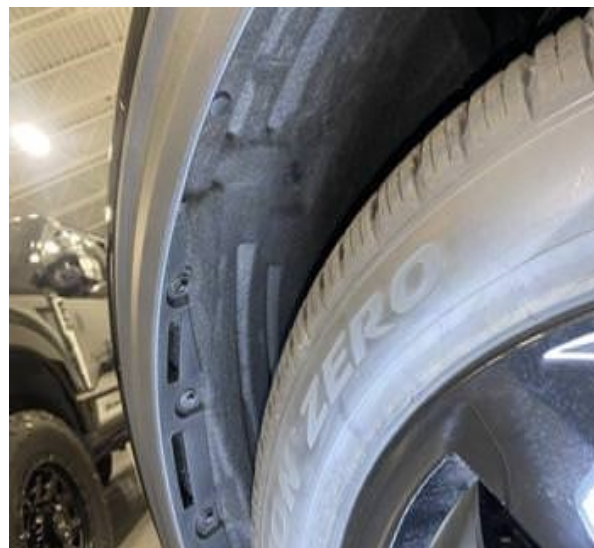
2: Remove the 9 fasteners on the bottom of the front grill assembly using a 7mm socket and socket wrench



## Removing the front grill assembly

**Starting on the driver-side of the vehicle for steps 3-6**

3: remove the 4 fender trim bolts located on the inside of the wheel well towards the front of the vehicle using a 7mm socket and socket wrench



## Removing the front grill assembly

Starting on the driver side of the vehicle for steps 3-6

4: undo 3 fender clips, 2 are located near the bottom of the fender liner and 1 is near the top



## Removing the front grill assembly

Starting on the driver side of the vehicle for steps 3-6

5: Undo the 4 fender trim clips up until the fender-front grill assembly seam and tuck the fender liner out of the way for step 6



## Removing the front grill assembly

Starting on the driver side of the vehicle for steps 3-6

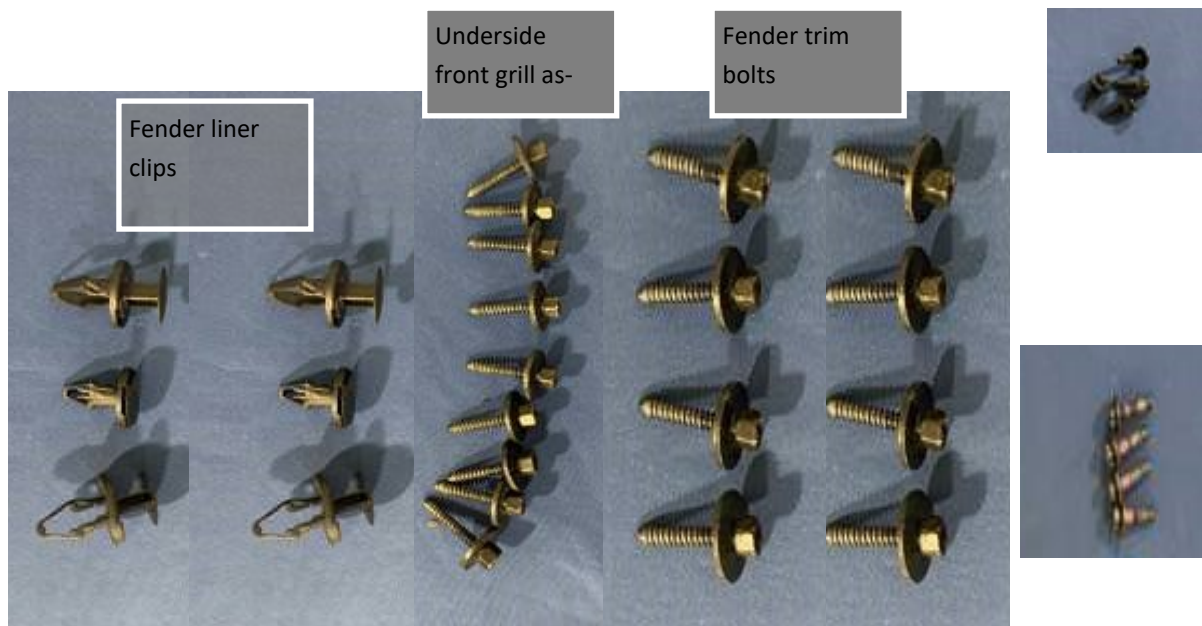
6: remove the 2 bolts at the fender-front grill assembly seam in the wheel well with a 10mm socket and socket wrench

7: Repeat steps 3-6 for the passenger side of the vehicle



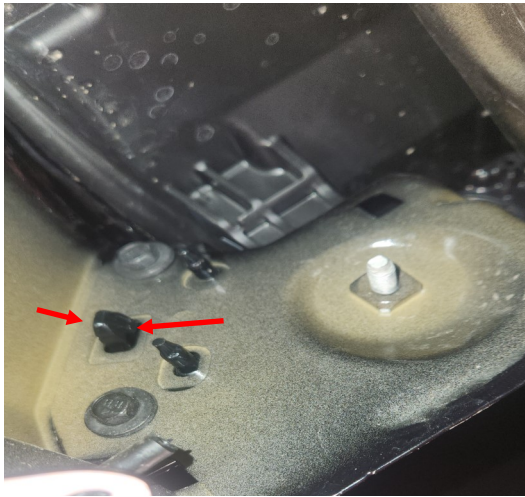
## Removing the front grill assembly

8: Verify all 31 pieces of hardware were removed and pull front grill assembly off just enough to gain access to the back side of the front grill assembly cover



## Removing the front grill assembly

9: Squeeze and push through the hole to undo the 2 clips located next to the bolts in step 6 on both the passenger and driver sides of the vehicle.



## Removing the front grill assembly

10: pull up and out on the top of the front grill assembly in the same location of the fasteners from step 1 to release the 2 clips and remove the front grill assembly then lay down the front grill assembly on a blanket or drop cloth. Be careful to not pull on the wiring harnesses attached to the front grill assembly



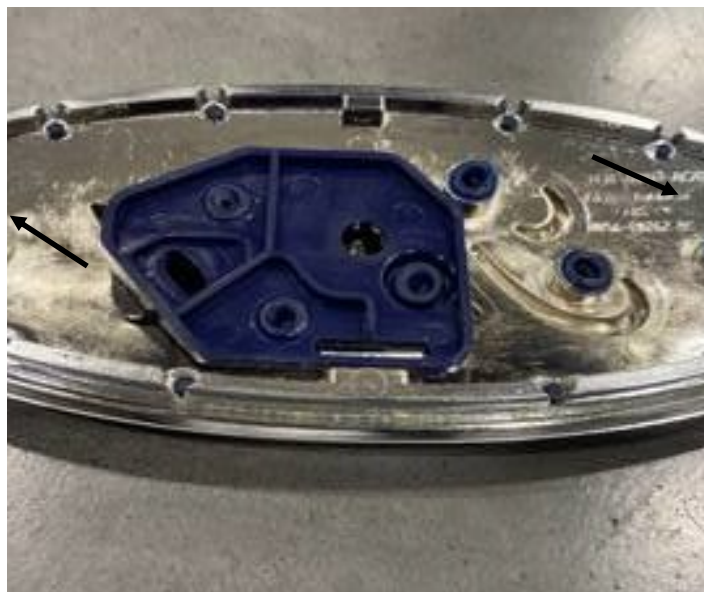
## Disconnecting the wiring harness

- 1: Lift and pull on the tab to release the 1-pin camera connector on the passenger side of the front grill assembly
- 2: Squeeze on the tab to release the 12-pin connector on the passenger side of the front grill assembly
- 3: Squeeze on the tab to release the 12-pin connector on the drive side of the front grill assembly



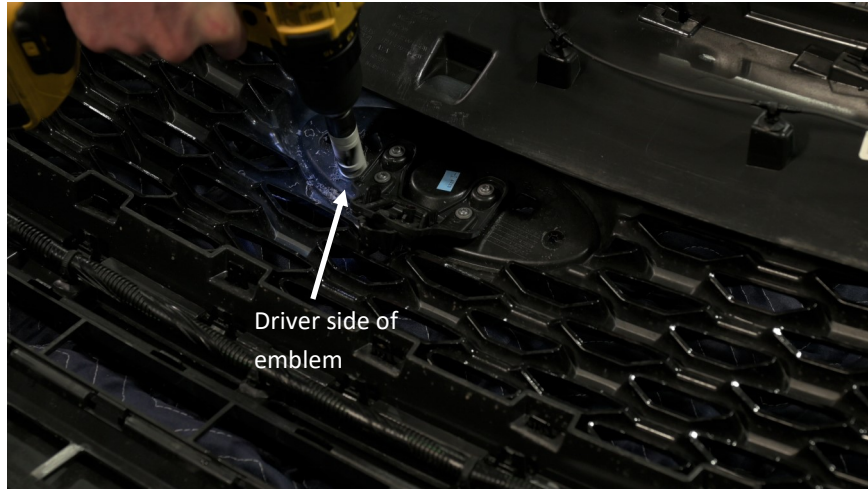
## Removing OE Ford emblem

- 1: Remove the 2 nuts off the back of the OE Ford emblem with a 10mm socket and pull the emblem off from the front of the grill assembly



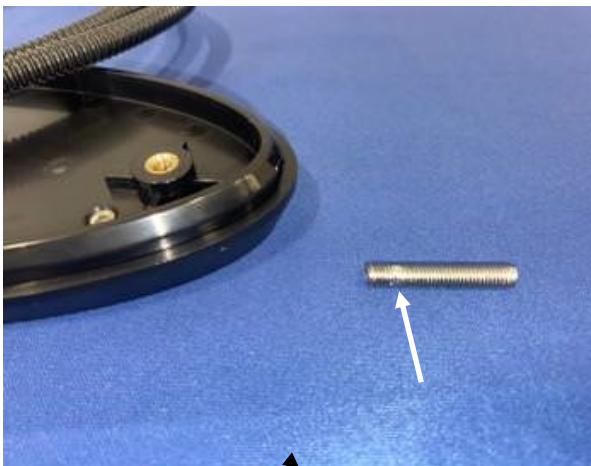
## Drilling the cable routing hole

- 1: Drill a hole behind the Ford emblem using a 1 inch hole saw
- 2: If there are any sharp edges on the hole, deburr them



## Assembling and mounting Putco emblem on grill

- 1: Screw Emblem Studs into Putco emblem **by hand!** with the short side of the stud threading into the emblem, these studs are directional! The short side has a slight break in the threads and screws into the emblem





## Assembling and mounting Putco emblem on grill

2: Run Putco emblem wiring harness through the 1" hole

3: Put emblem studs through OE stud holes and fasten the 2 nuts using a 8mm deep socket and socket wrench, these nuts just need to be snug, do not over tighten!



## Installing the quick connect harness

1: Pull the red tab on connector disconnect the 12-pin connector from the back side of the driver-side headlamp

2: Plug in male end (connector with red tab) of the quick connect harness into the back side of the driver-side headlamp

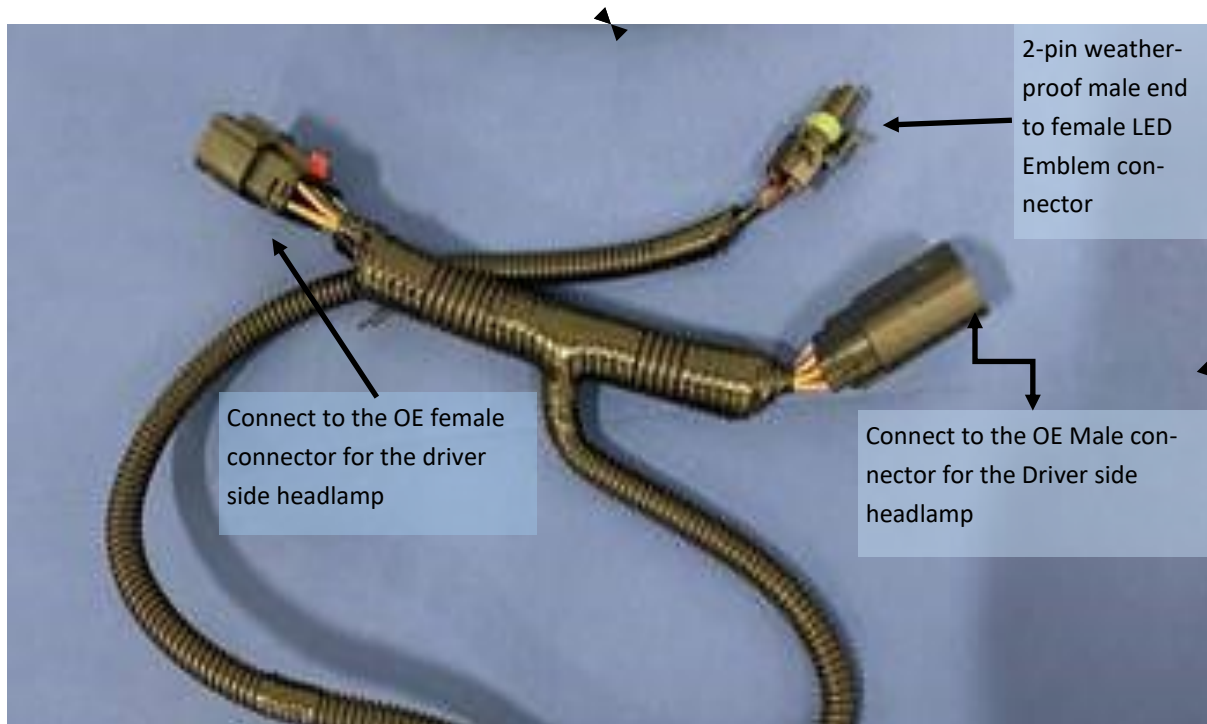


## Installing the quick connect harness

3: plug the female end (12-pin without red pull tab) of the quick connect harness into male 12-pin OE headlight connector that was originally in the headlamp



## Diagram of Quick connect harness



## Reinstalling OE Front grill assembly harness

1: Reconnect the 3 OE connectors on the front grill assembly, refer to “Disconnecting the wiring harness” on page 7

2: Lift grill assembly up but do not yet put it back on vehicle and proceed to next step, this may require more than one person to complete



## Routing Putco emblem harness

1: Route the Putco emblem wiring harness through the bolt access hole on the driver side of the hood latch

2: Get front grill assembly in place and reclip the top and side clips from steps 9 and 10 on page 6

3: Then continue to route the harness through the cable clip and under the front horizontal member of the chassis to the back side of the driver side headlamp



## Connecting Emblem to quick connect harness

- 1: plug the male quick connect harness 2-pin weatherproof connector into the female 2-pin connector off of the Putco emblem
- 2: Zip tie all loose cables and trim zip tie ends with side cutters



## Reinstalling front grill assembly fasteners and clips

**Starting on the driver side of the vehicle for steps 1-4**

- 1: reinstall the 2 bolts at the fender-front grill assembly seam in the wheel well with a 10mm socket and socket wrench
- 2: Untuck fender liner and push in the 3 fender clips, 2 are located near the bottom of the fender liner and 1 is near the top
- 3: Push on trim to reclip the 4 fender trim clips up until the fender-front grill assembly seam



## Reinstalling front grill assembly fasteners and clips

4: Reinstall the 4 fender trim bolts located on the inside of the wheel well towards the front of the vehicle using a 7mm socket and socket wrench

5: Repeat steps 1-4 for the passenger side of the vehicle



## Reinstalling front grill assembly fasteners and clips

6: Remove the 9 fasteners on the bottom of the front grill assembly using a 7mm socket and socket wrench

7: Reinstall the 4 fasteners on the top of the grill assembly using a 10mm socket and socket wrench



## Installation Checklist

- Check that all fasteners are properly tightened
- Clips are recliped
- All connectors are fully seated and connector tabs are pushed back in
- All loose cabling is ziptied and secure and all ziptie ends are trimed
- Wiring harnesses are routed properly and clear of any moving parts
- Test emblem for proper operation

**Enjoy your new Putco Product!**

